

# AC1200 Long Range Wi-Fi Dual-Band PCI-E Adapter EW-7822PIC

## Quick Installation Guide

01-2015 / v1.0

### **Edimax Technology Co., Ltd.**

No.3, Wu-Chuan 3rd Road, Wu-Gu, New Taipei City 24891, Taiwan

Email: [support@edimax.com.tw](mailto:support@edimax.com.tw)

---

### **Edimax Technology Europe B.V.**

Fijenhof 2, 5652 AE Eindhoven, The Netherlands

Email: [support@edimax.nl](mailto:support@edimax.nl)

---

### **Edimax Computer Company**

3350 Scott Blvd., Bldg.15 Santa Clara, CA 95054, USA

Live Tech Support: 1(800) 652-6776

Email: [support@edimax.com](mailto:support@edimax.com)

# Contents

<b>I. Product Information .....</b>	<b>1</b>
I-1. Package Contents .....	1
I-2. LED Status .....	1
I-3. System Requirements .....	1
<b>II. Hardware Installation .....</b>	<b>2</b>
<b>III. Setup Wizard .....</b>	<b>4</b>
III-1. Driver Installation .....	4
III-2. Driver Uninstallation .....	8
III-2-1. Windows XP/Vista/7 .....	8
III-2-2. Windows 8/8.1 .....	8
<b>IV. Using The Adapter .....</b>	<b>9</b>
<b>V. Troubleshooting .....</b>	<b>10</b>

## **Multi-Language Quick Installation Guide (QIG) on the CD**

**Čeština:** Českého průvodce rychlou instalací naleznete na přiloženém CD s ovladači.

**Deutsch:** Finden Sie bitte das deutsche S.A.L. beiliegend in der Treiber CD.

**Español:** Incluido en el CD el G.R.I. en Español.

**Français:** Veuillez trouver l'français G.I.R ci-joint dans le CD.

**Italiano:** Incluso nel CD il Q.I.G. in Italiano.

**Magyar:** A magyar telepítési útmutató megtalálható a mellékelt CD-n.

**Nederlands:** De nederlandse Q.I.G. treft u aan op de bijgesloten CD.

**Polski:** Skrócona instrukcja instalacji w języku polskim znajduje się na załączonej płycie CD.

**Português:** Incluído no CD o G.I.R. em Portugues.

**Русский:** Найдите Q.I.G. на русском языке на приложенном CD.

**Türkçe:** Ürün ile beraber gelen CD içinde Türkçe Hızlı Kurulum Kılavuzu'nu bulabilirsiniz.

**Українська:** Для швидкого налаштування Вашого пристрою, будь ласка, ознайомтесь з інструкцією на CD.

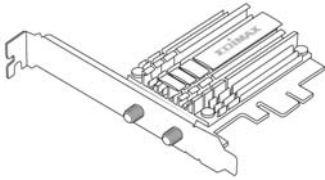
**Română:** Ghid de instalare Rapidă în limba Română în interiorul CD-ului.

# I. Product Information

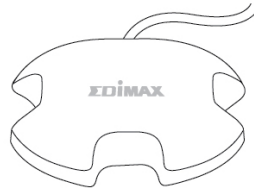
---

The EW-7822PIC is an 11ac dual-band 2.4GHz & 5GHz PCIe Wi-Fi adapter for desktop computers.

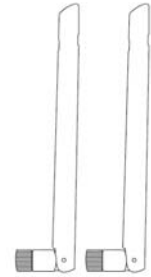
## I-1. Package Contents



**EW-7822PIC**



**Antenna Base**



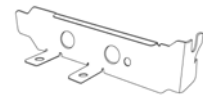
**Antennas x 2**



**CD-ROM**



**QIG**



**Low Profile Bracket**

## I-2. LED Status

Status	Description
Blinking	Wi-Fi activity: transferring or receiving data.

## I-3. System Requirements

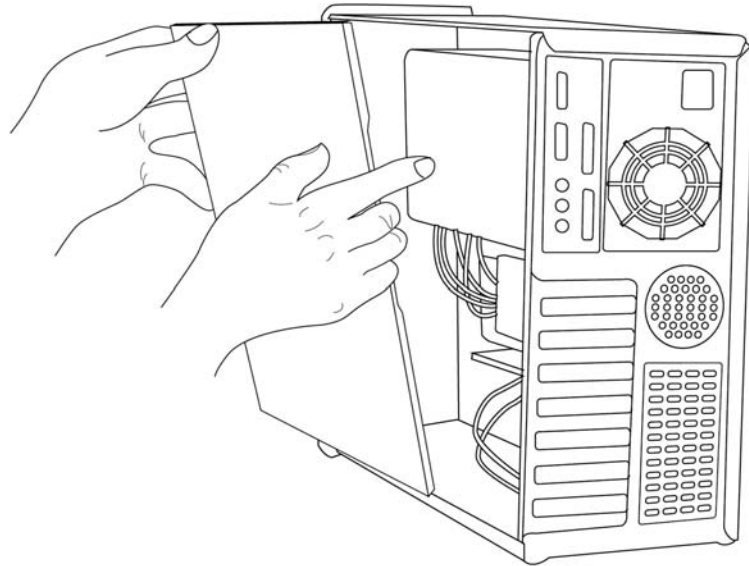
- Windows XP/Vista/7/8/8.1
- Hard Disk: 100MB
- CD-ROM Drive
- Empty PCIe Slot

## ***II. Hardware Installation***

---

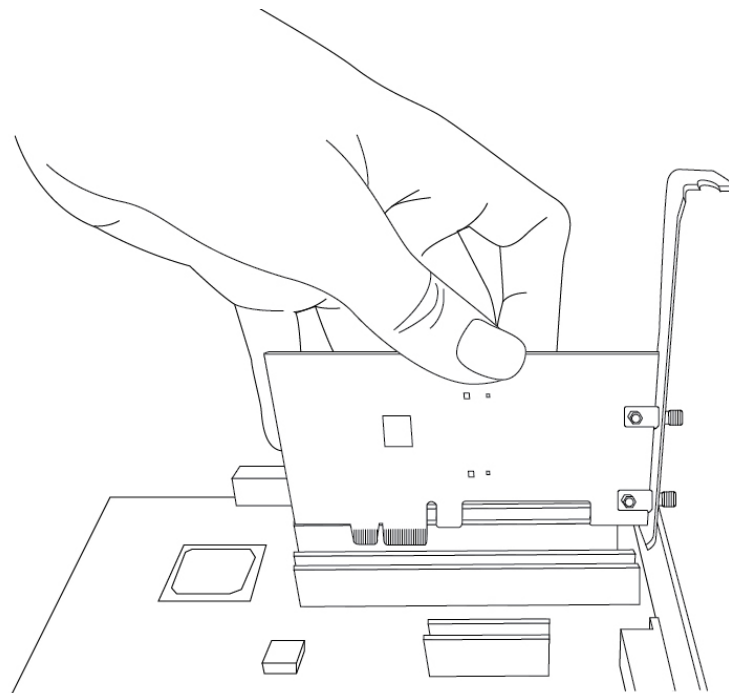
- 1.** Switch off and unplug your computer and remove the cover.

 ***Refer to your computer's user manual if you are unsure how to remove the cover and locate a PCIe slot.***

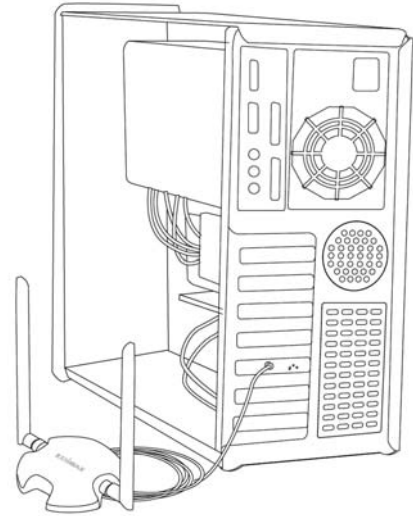
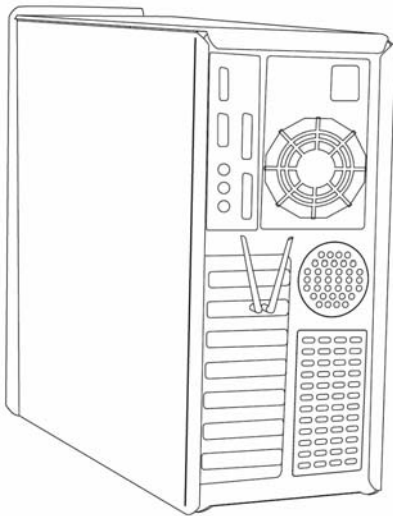
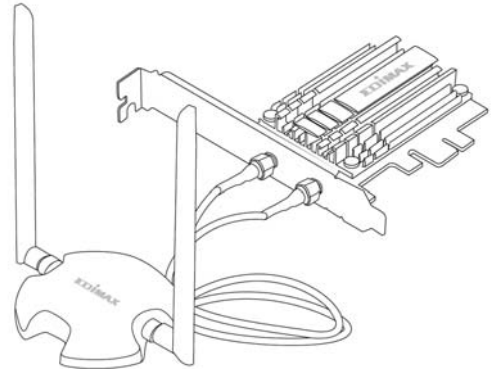
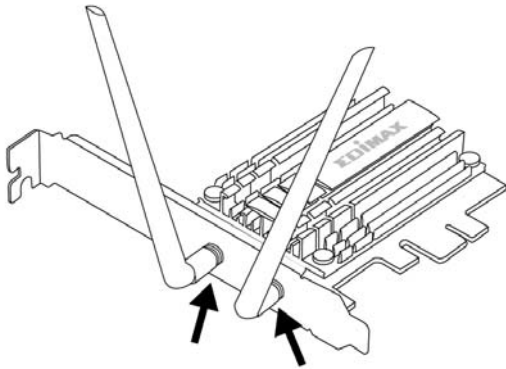


- 2.** Insert the wireless network card into an empty PCIe slot.

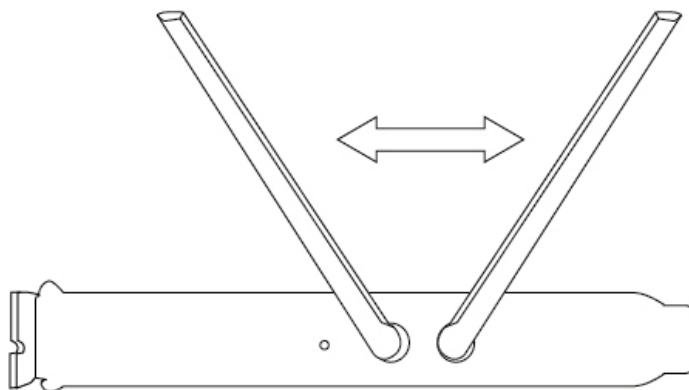
 ***A Low Profile PCIe bracket is also included in the package contents.***



**3.** Reattach the cover on your computer and screw in the included antennas directly to your wireless network card or use the included antenna base.



**4.** If you need, you can adjust the position of the antenna(s) for improved wireless reception.

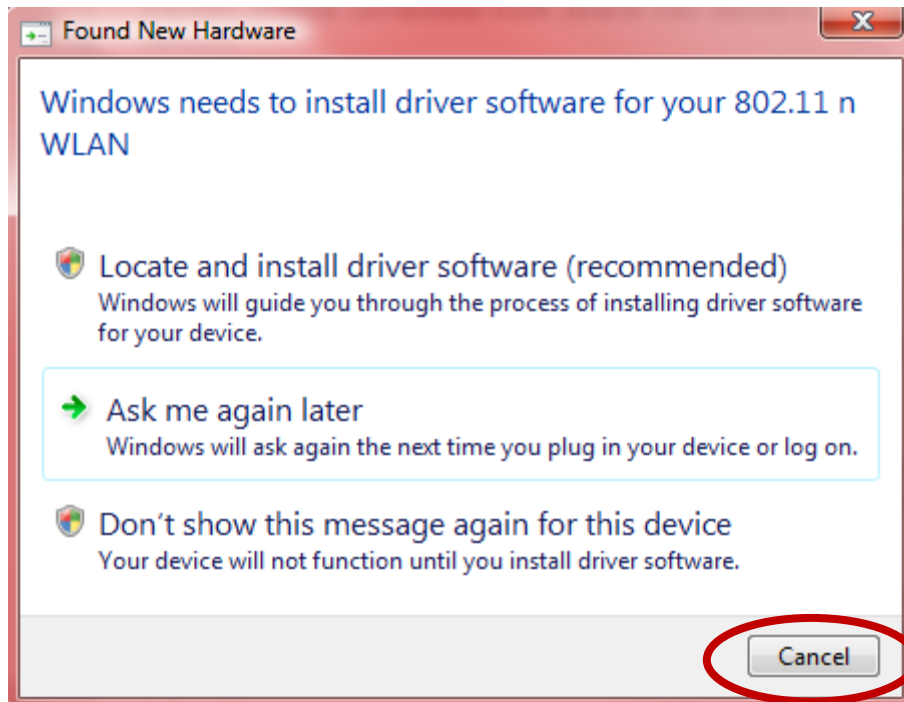


## III. Setup Wizard

---

### III-1. Driver Installation


1. Switch your computer on and if a Windows “Found New Hardware” wizard opens, please close it.

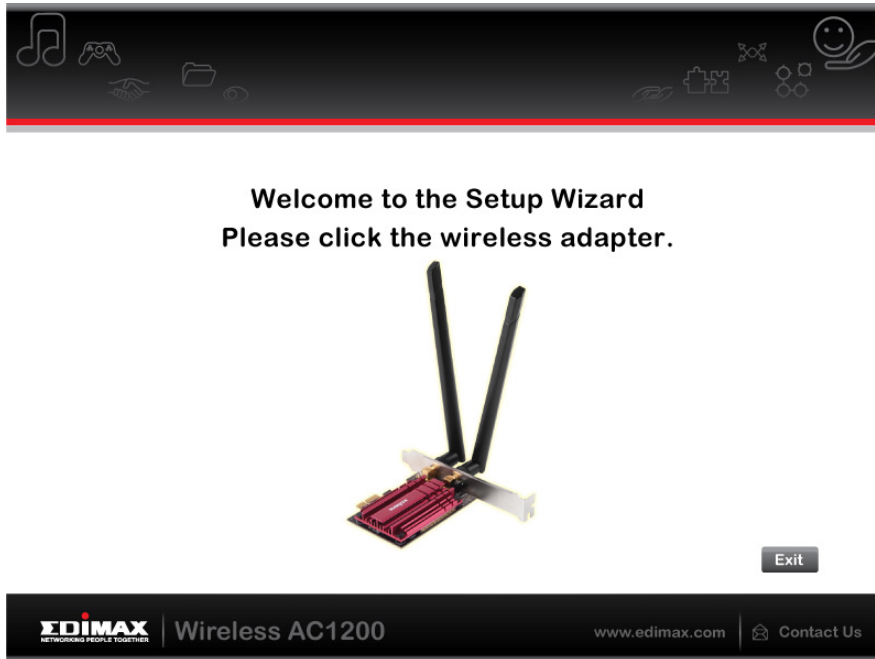


2. Insert the included CD-ROM into the CD drive of your computer.

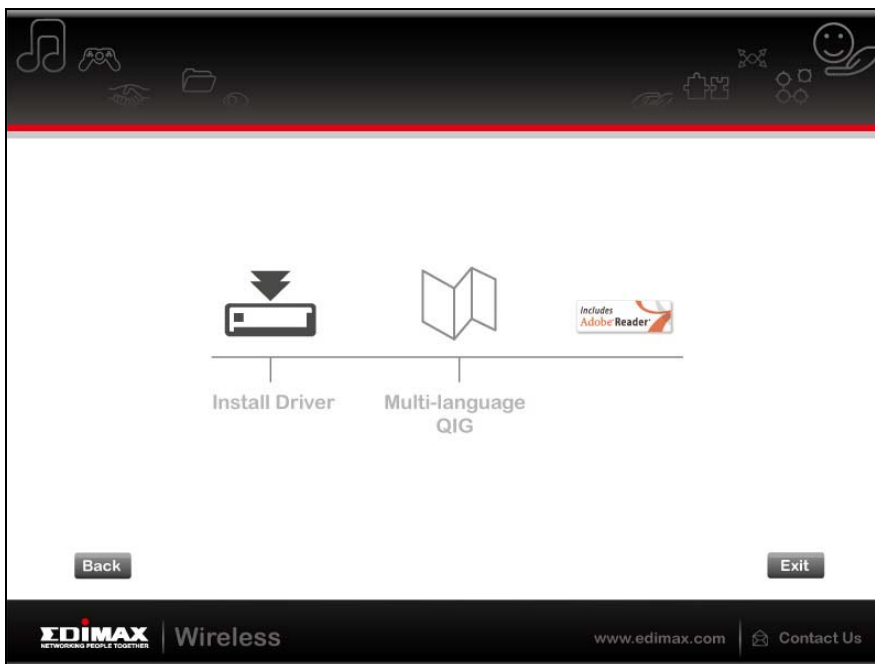
 ***The setup wizard is also available for download from the Edimax website.***

3. The setup wizard will open as shown below. Click on your wireless PCIe adapter to continue.

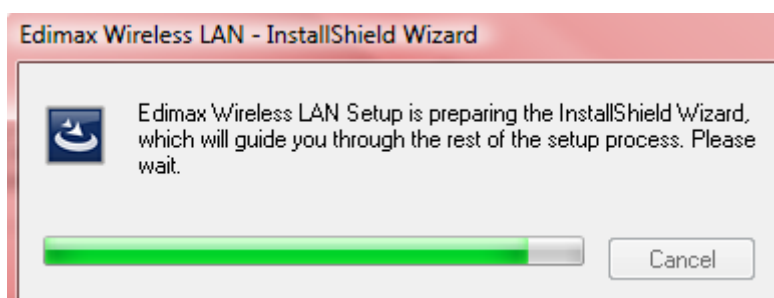
 ***If the CD doesn't auto-run or if you downloaded the setup wizard, please browse to the "Autorun" folder of the CD.***



4. Click “Install Driver” to continue to install the drivers for your EW-7822PIC.

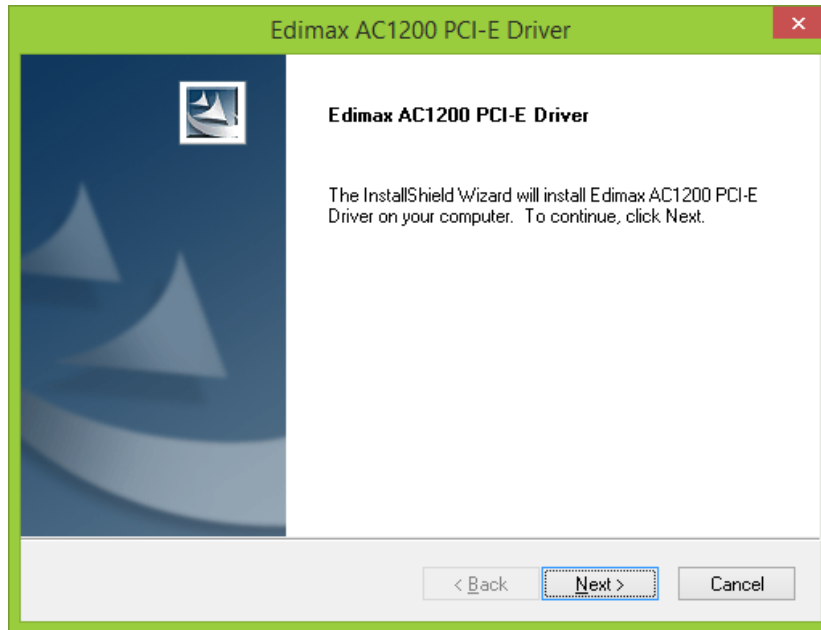


5. Please wait while the setup wizard prepares to install the drivers.

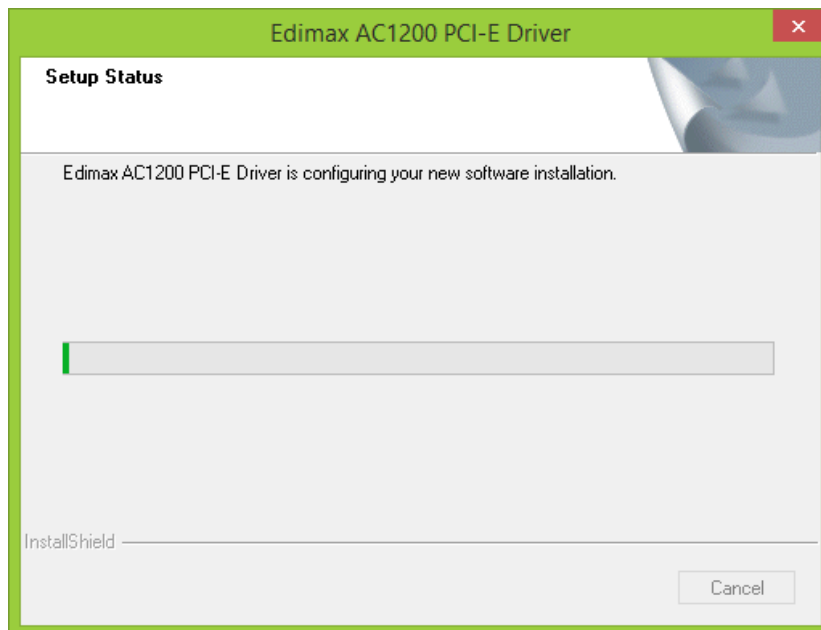




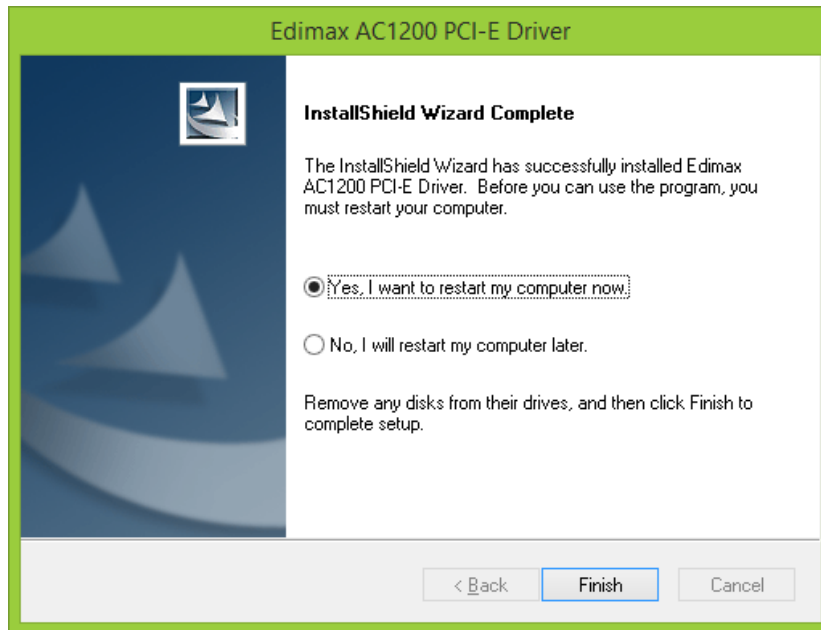
6. Click “Next” to install the driver.



7. Please wait while the driver is installing.



8. When the installation is complete, select whether to restart your computer now or later and click “Finish”.

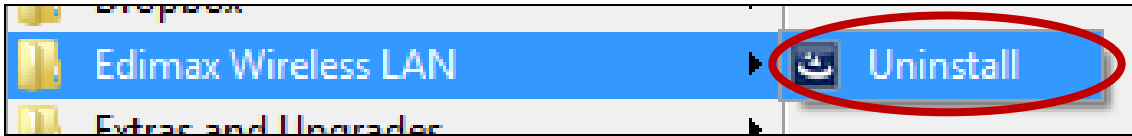


9. After restarting, you can connect to an available Wi-Fi network as usual. For guidance on doing so, please refer to **IV. Using The Adapter.**

## III-2. Driver Uninstallation

### III-2-1. Windows XP/Vista/7

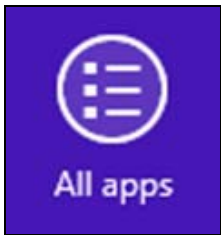
1. Go to **Start > Programs > Edimax Wireless LAN > Uninstall**.



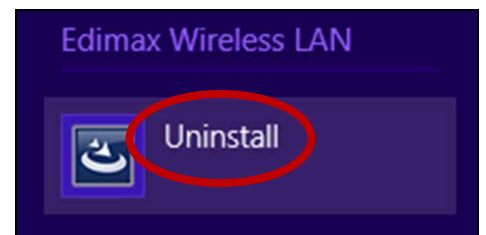
2. Follow the on screen instructions. An uninstall wizard will guide you through the process.

### III-2-2. Windows 8/8.1

1. Right click anywhere on the “Start” screen and then click the “All apps” icon in the bottom right corner.



2. Locate the Edimax Wireless LAN category, select “Uninstall” and follow the on-screen instructions.



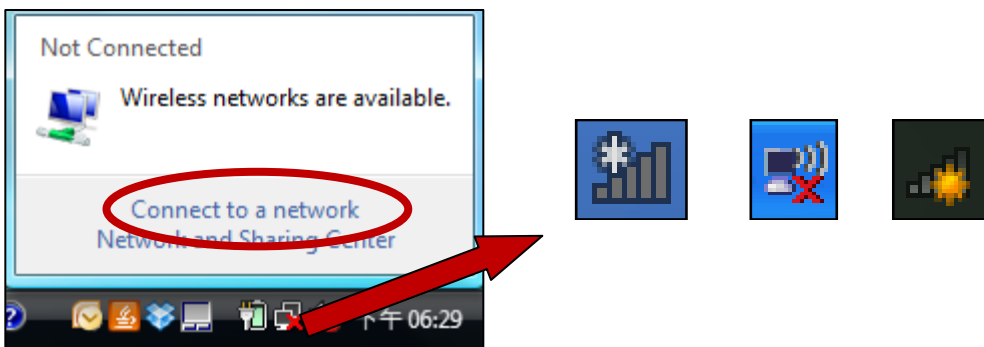
## IV. Using The Adapter

---

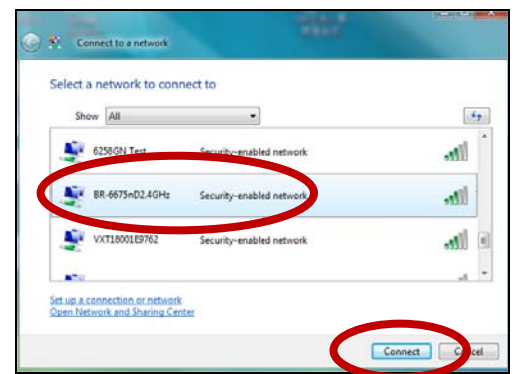
After you have installed the driver, you can connect to a Wi-Fi network as usual.

Below is an example of how to connect using Windows Vista - the process may vary slightly for other versions of Windows.

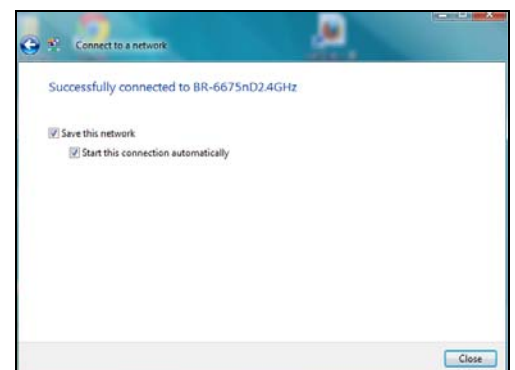
1. Click the network icon (examples below) in the system tray and select "Connect to a network".



2. Search for the SSID of your Wi-Fi network and then click "Connect". If you set a password for your network, you will then be prompted to enter it.



3. After correctly entering your password, you will be successfully connected to your Wi-Fi network.



## ***V. Troubleshooting***

---

### **1. My Wi-Fi speed seems slow or not at 802.11ac rates.**

- a. To achieve 802.11ac Wi-Fi speeds, it is necessary to connect to an 802.11ac Wi-Fi router.
- b. You may be experiencing your internet speed and not your local network speed. Internet speeds are limited by the internet bandwidth provided by your service provider. Websites such as [www.speedtest.net](http://www.speedtest.net) test internet speed and not your internal network speed. Transferring files between two local computers would give you your actual network speed.
- c. Check that your antennas are fastened tightly to the antenna ports or antenna base. Place the antenna base in a location with less obstruction and angle the antennas for better performance.

### **2. I've inserted the PCIe adapter and installed the drivers, but I am unable to connect to any Wi-Fi networks.**

- a. Go to your control panel and uninstall the EW-7822PIC driver. Check that all antivirus programs are disabled. Then reinstall the EW7822PIC driver.

## **COPYRIGHT**

Copyright © Edimax Technology Co., Ltd. all rights reserved. No part of this publication may be reproduced, transmitted, transcribed, stored in a retrieval system, or translated into any language or computer language, in any form or by any means, electronic, mechanical, magnetic, optical, chemical, manual or otherwise, without the prior written permission from Edimax Technology Co., Ltd.

Edimax Technology Co., Ltd. makes no representations or warranties, either expressed or implied, with respect to the contents hereof and specifically disclaims any warranties, merchantability, or fitness for any particular purpose. Any software described in this manual is sold or licensed as is. Should the programs prove defective following their purchase, the buyer (and not this company, its distributor, or its dealer) assumes the entire cost of all necessary servicing, repair, and any incidental or consequential damages resulting from any defect in the software. Edimax Technology Co., Ltd. reserves the right to revise this publication and to make changes from time to time in the contents hereof without the obligation to notify any person of such revision or changes.

The product you have purchased and the setup screen may appear slightly different from those shown in this QIG. The software and specifications are subject to change without notice. Please visit our website [www.edimax.com](http://www.edimax.com) for updates. All brand and product names mentioned in this manual are trademarks and/or registered trademarks of their respective holders.

# Federal Communication Commission Interference Statement

This equipment has been tested and found to comply with the limits for a Class B digital device, pursuant to Part 15 of FCC Rules. These limits are designed to provide reasonable protection against harmful interference in a residential installation. This equipment generates, uses, and can radiate radio frequency energy and, if not installed and used in accordance with the instructions, may cause harmful interference to radio communications. However, there is no guarantee that interference will not occur in a particular installation. If this equipment does cause harmful interference to radio or television reception, which can be determined by turning the equipment off and on, the user is encouraged to try to correct the interference by one or more of the following measures:

1. Reorient or relocate the receiving antenna.
2. Increase the separation between the equipment and receiver.
3. Connect the equipment into an outlet on a circuit different from that to which the receiver is connected.
4. Consult the dealer or an experienced radio technician for help.

## FCC Caution

This device and its antenna must not be co-located or operating in conjunction with any other antenna or transmitter. This device complies with Part 15 of the FCC Rules. Operation is subject to the following two conditions: (1) this device may not cause harmful interference, and (2) this device must accept any interference received, including interference that may cause undesired operation. Any changes or modifications not expressly approved by the party responsible for compliance could void the authority to operate equipment.

## Federal Communications Commission (FCC) Radiation Exposure Statement

This equipment complies with FCC radiation exposure set forth for an uncontrolled environment. In order to avoid the possibility of exceeding the FCC radio frequency exposure limits, human proximity to the antenna shall not be less than 2.5cm (1 inch) during normal operation.

## Federal Communications Commission (FCC) RF Exposure Requirements

This EUT is compliance with SAR for general population/uncontrolled exposure limits in ANSI/IEEE C95.1-1999 and had been tested in accordance with the measurement methods and procedures specified in OET Bulletin 65 Supplement C. The equipment version marketed in US is restricted to usage of the channels 1-11 only. This equipment is restricted to *indoor* use when operated in the 5.15 to 5.25 GHz frequency range.

# R&TTE Compliance Statement

This equipment complies with all the requirements of DIRECTIVE 1999/5/EC OF THE EUROPEAN PARLIAMENT AND THE COUNCIL of March 9, 1999 on radio equipment and telecommunication terminal equipment and the mutual recognition of their conformity (R&TTE). The R&TTE Directive repeals and replaces in the directive 98/13/EEC (Telecommunications Terminal Equipment and Satellite Earth Station Equipment) As of April 8, 2000.

## Safety

This equipment is designed with the utmost care for the safety of those who install and use it. However, special attention must be paid to the dangers of electric shock and static electricity when working with electrical equipment. All guidelines of this and of the computer manufacture must therefore be allowed at all times to ensure the safe use of the equipment.

## EU Countries Intended for Use

The ETSI version of this device is intended for home and office use in Austria, Belgium, Bulgaria, Cyprus, Czech, Denmark, Estonia, Finland, France, Germany, Greece, Hungary, Ireland, Italy, Latvia, Lithuania, Luxembourg, Malta, Netherlands, Poland, Portugal, Romania, Slovakia, Slovenia, Spain, Sweden, Turkey, and United Kingdom. The ETSI version of this device is also authorized for use in EFTA member states: Iceland, Liechtenstein, Norway, and Switzerland.

## EU Countries Not Intended for Use

None.

## EU Declaration of Conformity

- English:** This equipment is in compliance with the essential requirements and other relevant provisions of Directive 1999/5/EC, 2009/125/EC.
- Français:** Cet équipement est conforme aux exigences essentielles et autres dispositions de la directive 1999/5/CE, 2009/125/CE.
- Čeština:** Toto zařízení je v souladu se základními požadavky a ostatními příslušnými ustanoveními směrnic 1999/5/ES, 2009/125/ES.
- Polski:** Urządzenie jest zgodne z ogólnymi wymaganiami oraz szczególnymi warunkami określonymi Dyrektywą UE 1999/5/EC, 2009/125/EC.
- Română:** Acest echipament este în conformitate cu cerințele esențiale și alte prevederi relevante ale Directivei 1999/5/CE, 2009/125/CE.
- Русский:** Это оборудование соответствует основным требованиям и положениям Директивы 1999/5/EC, 2009/125/EC.
- Magyar:** Ez a berendezés megfelel az alapvető követelményeknek és más vonatkozó irányelveknek (1999/5/EK, 2009/125/EC).
- Türkçe:** Bu cihaz 1999/5/EC, 2009/125/EC direktifleri zorunlu istekler ve diğer hükümlerle ile uyumludur.
- Українська:** Обладнання відповідає вимогам і умовам директиви 1999/5/EC, 2009/125/EC.
- Slovenčina:** Toto zariadenie spĺňa základné požiadavky a ďalšie príslušné ustanovenia smerníc 1999/5/ES, 2009/125/ES.
- Deutsch:** Dieses Gerät erfüllt die Voraussetzungen gemäß den Richtlinien 1999/5/EC, 2009/125/EC.
- Español:** El presente equipo cumple los requisitos esenciales de la Directiva 1999/5/EC, 2009/125/EC.
- Italiano:** Questo apparecchio è conforme ai requisiti essenziali e alle altre disposizioni applicabili della Direttiva 1999/5/CE, 2009/125/CE.
- Nederlands:** Dit apparaat voldoet aan de essentiële eisen en andere van toepassing zijnde bepalingen van richtlijn 1999/5/EC, 2009/125/EC.
- Português:** Este equipamento cumpre os requisitos essenciais da Directiva 1999/5/EC, 2009/125/EC.
- Norsk:** Dette utstyret er i samsvar med de viktigste kravene og andre relevante regler i Direktiv 1999/5/EC, 2009/125/EC.
- Svenska:** Denna utrustning är i överensstämmelse med de väsentliga kraven och övriga relevanta bestämmelser i direktiv 1999/5/EG, 2009/125/EG.
- Dansk:** Dette udstyr er i overensstemmelse med de væsentligste krav og andre relevante forordninger i direktiv 1999/5/EC, 2009/125/EC.
- Suomi:** Tämä laite täyttää direktiivien 1999/5/EY, 2009/125/EY oleelliset vaatimukset ja muut asiaankuuluvat määräykset.

FOR USE IN

AT	BE	CY	CZ	DK	EE	FI	FR	RU				
DE	GR	HU	IE	IT	LV	LT	LU	MT	NL	PL	PT	UA
SK	SI	ES	SE	GB	IS	LI	NO	CH	BG	RO	TR	



---

### WEEE Directive & Product Disposal



At the end of its serviceable life, this product should not be treated as household or general waste. It should be handed over to the applicable collection point for the recycling of electrical and electronic equipment, or returned to the supplier for disposal.



## Declaration of Conformity

We, Edimax Technology Co., Ltd., declare under our sole responsibility, that the equipment described below complies with the requirements of the European R&TTE directives.

**Equipment:** AC1200 Long Range Wi-Fi Dual-Band PCI Express Adapter

**Model No.:** EW-7822PIC

The following European standards for essential requirements have been followed:

### Directives 1999/5/EC

Spectrum : ETSI EN 300 328 V1.8.1 (2012-06);  
ETSI EN 301 893 V1.7.1 (2012-06)  
EMC : EN 301 489-1 V1.9.2 (2011);  
EN 301 489-17 V2.2.1 (2012)  
Safety (LVD) : EN 60950-1:2006+A11:2009+A1:2010+A12:2011

### Directives 2006/95/EC

Safety (LVD) : EN 60950-1:2006+A11:2009+A1:2010+A12:2011

Edimax Technology Co., Ltd.  
No. 3, Wu Chuan 3<sup>rd</sup> Road,  
Wu-Ku Industrial Park,  
New Taipei City, Taiwan



Date of Signature: February, 2015

Signature:

A handwritten signature in black ink, appearing to read 'Albert Chang', written over a horizontal line.

Printed Name: Albert Chang

Title: Director

Edimax Technology Co., Ltd.



**EDIMAX**  
NETWORKING PEOPLE TOGETHER