

AC1200 Uzun Mesafe Wi-Fi Çift Bant PCI-E Adaptör EW-7822PIC

Hızlı Kurulum Kılavuzu

01-2015 / v1.0

Edimax Technology Co., Ltd.

No.3, Wu-Chuan 3rd Road, Wu-Gu, New Taipei City 24891, Taiwan

Email: support@edimax.com.tw

Edimax Technology Europe B.V.

Fijenhof 2, 5652 AE Eindhoven, The Netherlands

Email: support@edimax.nl

Edimax Computer Company

3350 Scott Blvd., Bldg.15 Santa Clara, CA 95054, USA

Live Tech Support: 1(800) 652-6776

Email: support@edimax.com

İçerik

I. Ürün Bilgisi	1
I-1. Paket İçeriği	1
I-2. LED Durumu	1
I-3. Sistem Gereksinimleri	1
II. Donanım Kurulumu	2
III. Kurulum Sihirbazı	4
III-1. Sürücünün Kurulması	4
III-2. Sürücünün Kaldırılması	8
III-2-1. Windows XP/Vista/7	8
III-2-2. Windows 8/8.1	8
IV. Adaptörü Kullanmak	9
V. Sorun Giderme	10

Multi-Language Quick Installation Guide (QIG) on the CD

Čeština: Českého průvodce rychlou instalací naleznete na přiloženém CD s ovladači.

Deutsch: Finden Sie bitte das deutsche S.A.L. beiliegend in der Treiber CD.

Español: Incluido en el CD el G.R.I. en Español.

Français: Veuillez trouver l'français G.I.R ci-joint dans le CD.

Italiano: Incluso nel CD il Q.I.G. in Italiano.

Magyar: A magyar telepítési útmutató megtalálható a mellékelt CD-n.

Nederlands: De nederlandse Q.I.G. treft u aan op de bijgesloten CD.

Polski: Skrócona instrukcja instalacji w języku polskim znajduje się na załączonej płycie CD.

Português: Incluído no CD o G.I.R. em Portugues.

Русский: Найдите Q.I.G. на русском языке на приложенном CD.

Türkçe: Ürün ile beraber gelen CD içinde Türkçe Hızlı Kurulum Kılavuzu'nu bulabilirsiniz.

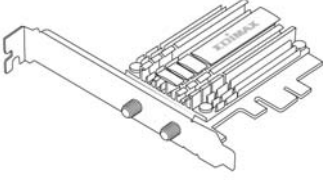
Українська: Для швидкого налаштування Вашого пристрою, будь ласка, ознайомтесь з інструкцією на CD.

Română: Ghid de instalare Rapidă în limba Română în interiorul CD-ului.

I. Ürün Bilgisi

EW-7822PIC, masaüstü bilgisayarlar için 11ac çift bant 2.4GHz & 5GHz PCIe Wi-Fi adaptördür.

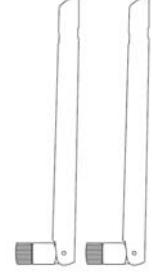
I-1. Paket İçeriği



EW-7822PIC



Anten Ayağı



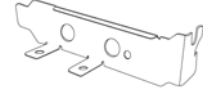
2 x Anten



CD-ROM



QIG



Düşük Profil Braket

I-2. LED Durumu


Durum	Açıklama
Yanıp Sönüyor	Wi-Fi aktivitesi: veri alıyor ya da transfer ediyor.

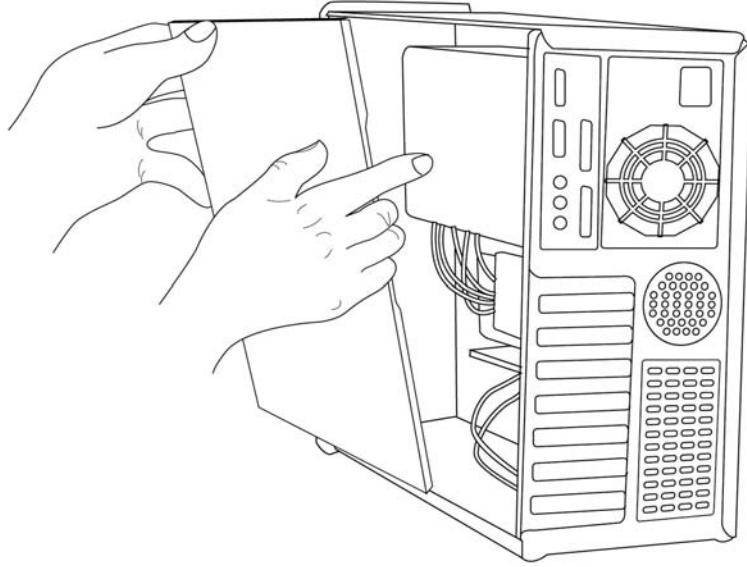
I-3. Sistem Gereksinimleri

- Windows XP/Vista/7/8/8.1
- Hard Disk: 100MB
- CD-ROM Sürücü
- Boş PCIe Yuvası

II. Donanım Kurulumu

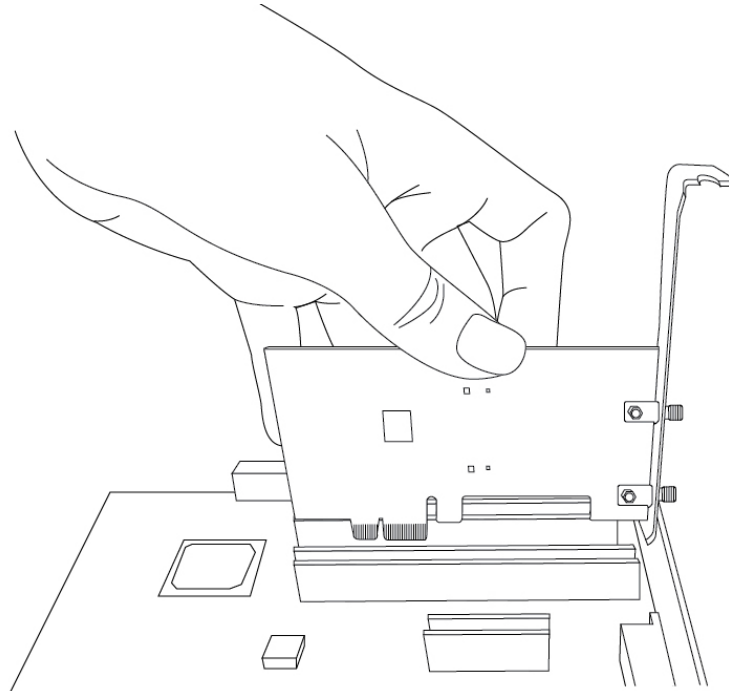
1. Bilgisayarınızı kapatınız ve kapağını çıkarınız.

 **Eğer bilgisayarınızın kapağını nasıl çıkaracağınızdan ve adaptörü PCIe slotuna nasıl takacağınızdan emin değilseniz kullanma kılavuzunu kontrol ediniz.**

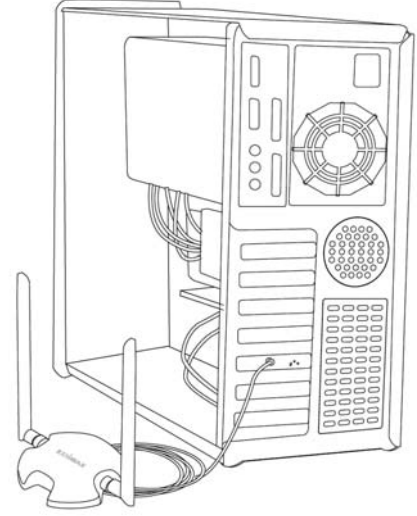
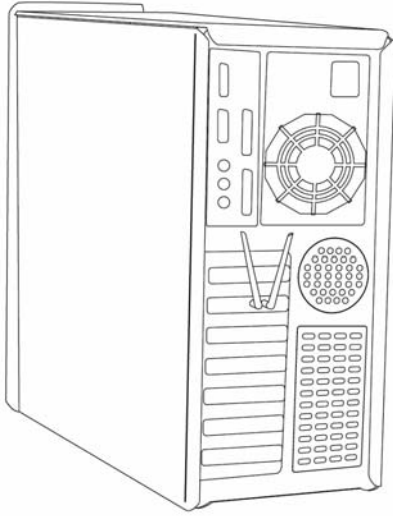
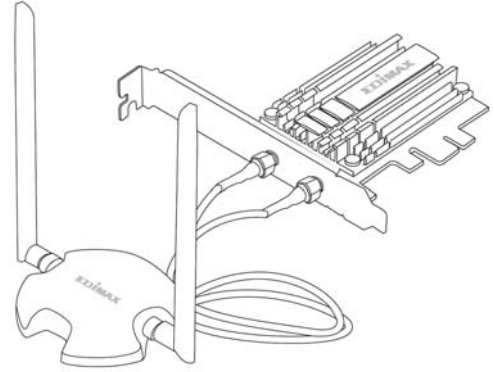
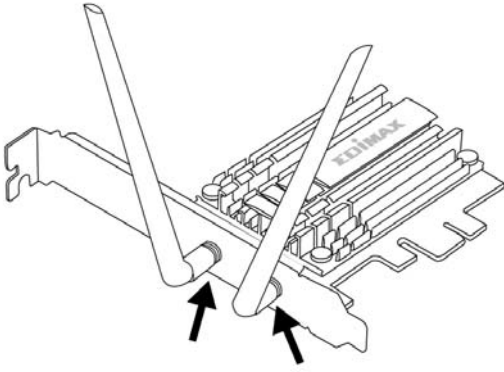


2. Kablosuz ağ kartını boş PCIe slotuna takınız.

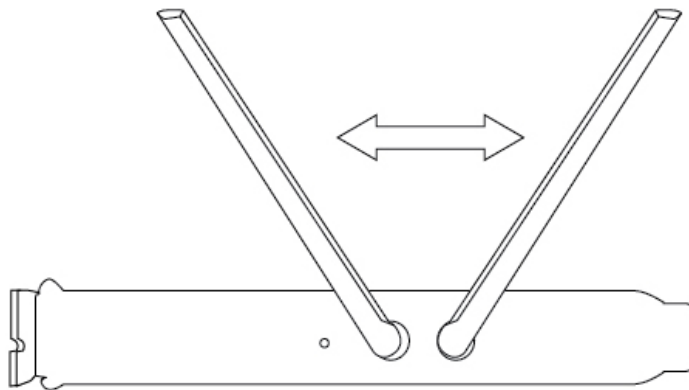
 **Paket içeriğinde düşük profil braket bulunmaktadır.**



3. Bilgisayarınızın kapağını takınız ve antenleri, direk olarak kablosuz ağ kartınıza ya da anten ayağına takınız.



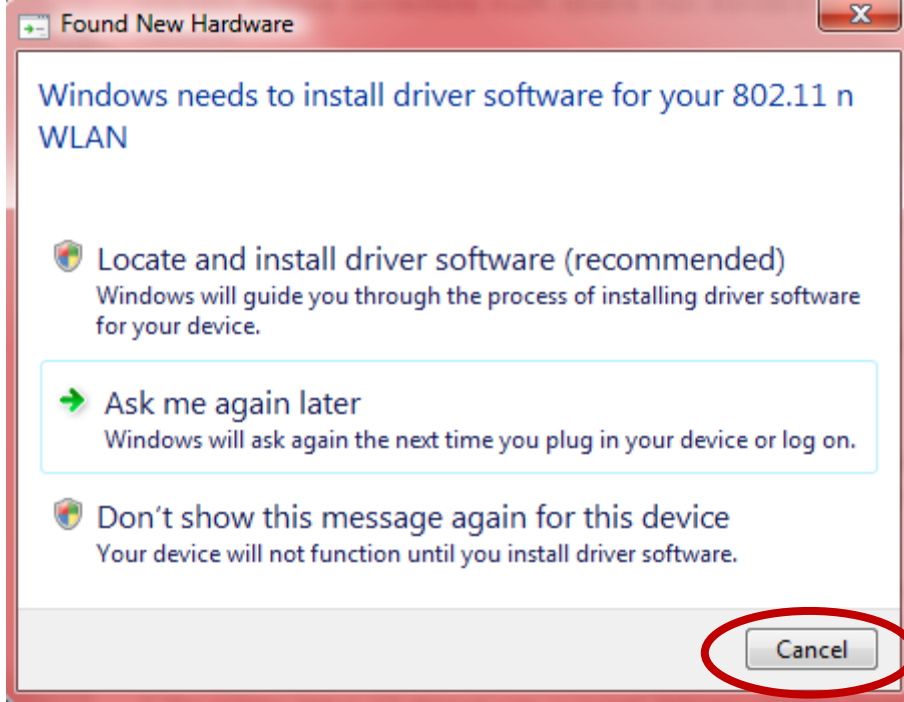
4. İhtiyaç duymanız halinde, daha iyi kablosuz çekimi için antenlerin pozisyonu değiştirebilirsiniz.



III. Kurulum Sihirbazı

III-1. Sürücünün Kurulması

1. Bilgisayarınızı açınız, “Yeni Donanım Bulundu” sihirbazı açılırsa lütfen kapatınız.



2. Kutu içinden çıkan CD-ROM'u bilgisayarınızın CD sürücüsüne takınız.

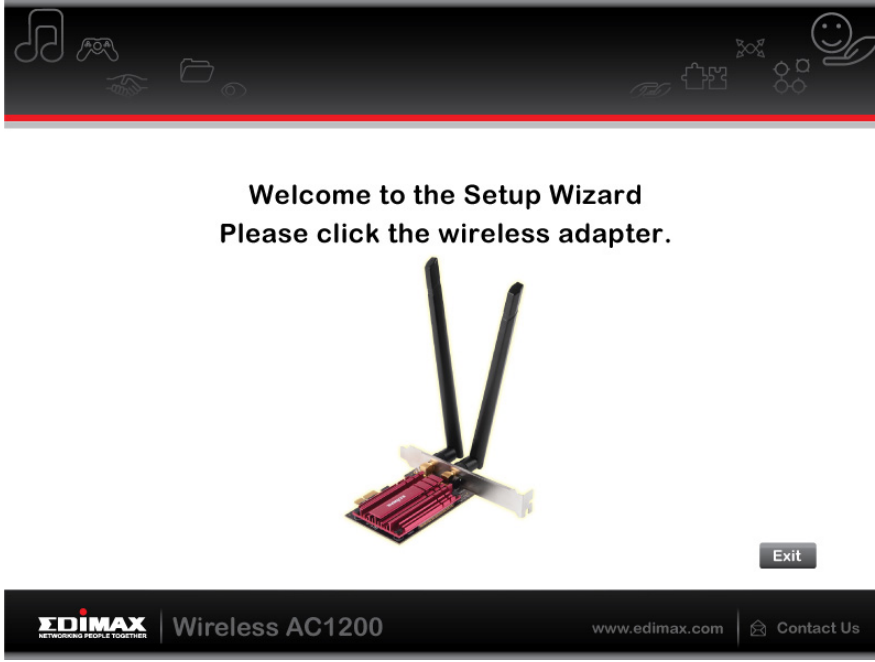


Kurulum sihirbazı Edimax'in web sitesinden de indirilebilir.

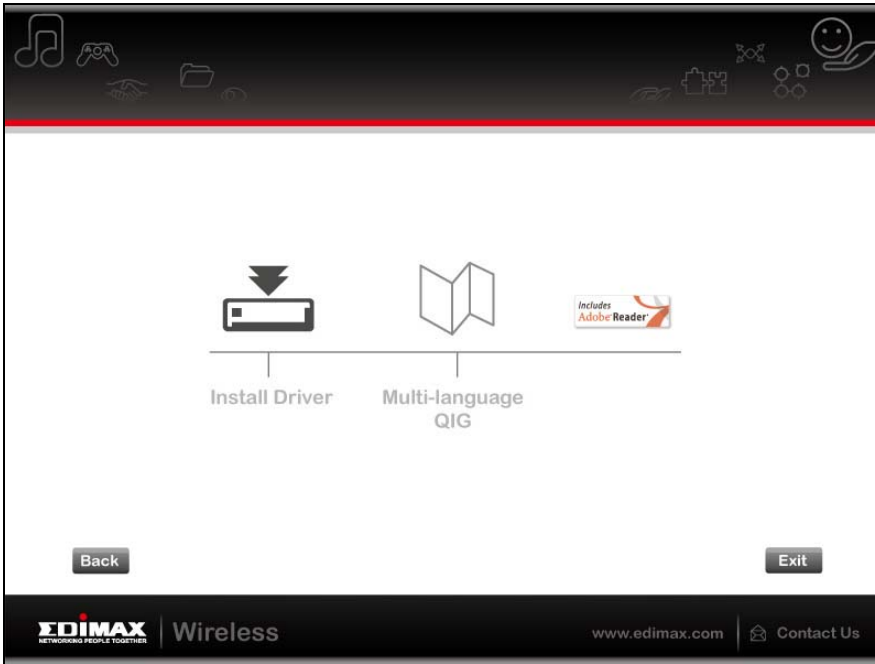
3. Kurulum sihirbazı aşağıda gösterildiği gibi açılacaktır. Devam etmek için kablosuz PCIe adaptörünüze tıklayınız.



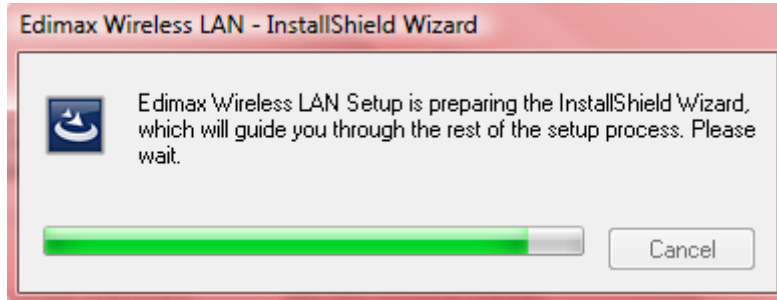
Eğer CD otomatik çalışmadıysa ya da kurulum sihirbazını indirdiyseniz, lütfen CD'nin "Autorun" klasörünü açınız.



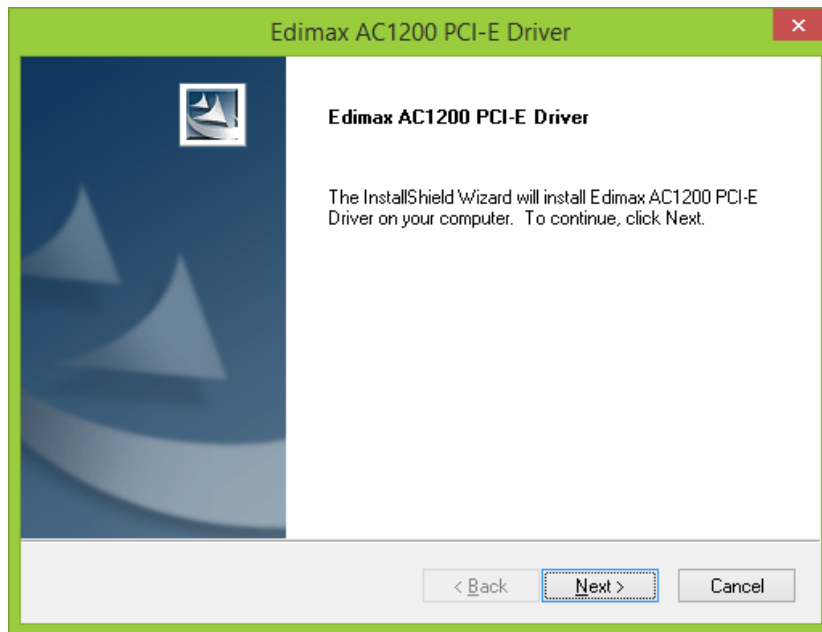
4. EW-7822PIC cihazının sürücülerini kurmak için “Sürücüyü Yükle” linkine tıklayınız.



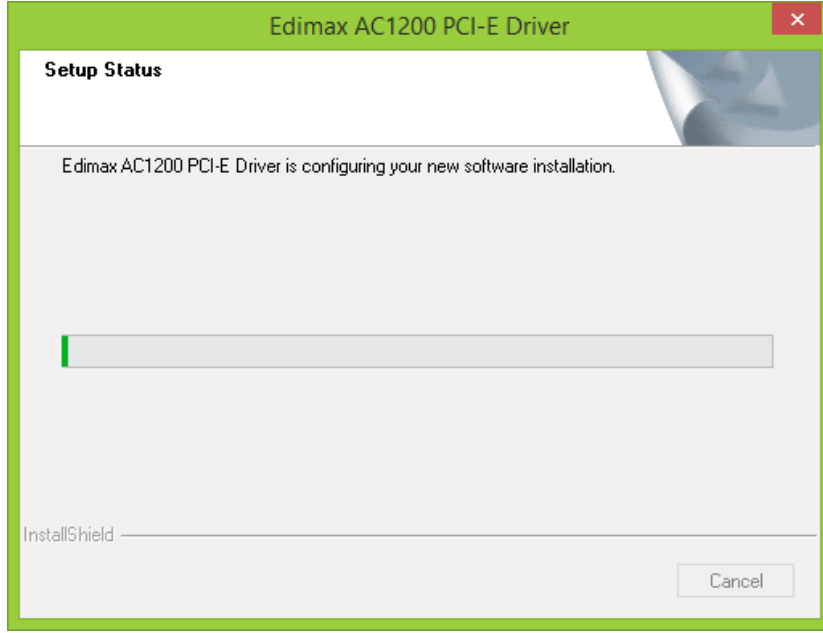
5. Kurulum sihirbazı sürücülerini yüklemeye hazırlanırken lütfen bekleyiniz.



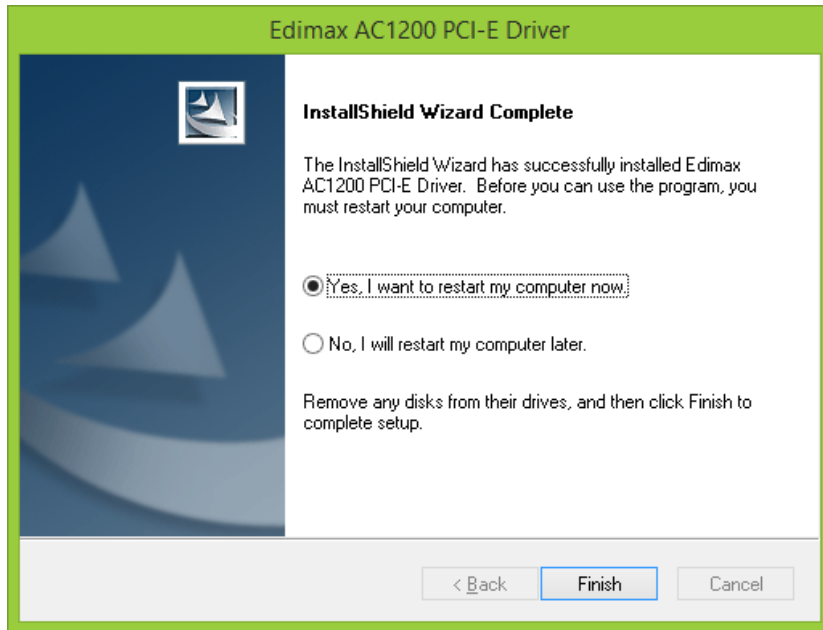
6. Sürücüyü yüklemek için "İleri" butonuna tıklayınız.



7. Sürücü yüklenirken lütfen bekleyiniz.



8. Kurulum tamamlandığında, bilgisayarınızı hemen ya da daha sonra yeniden başlatacağınızı seçiniz ve “Bitir” butonuna tıklayınız.

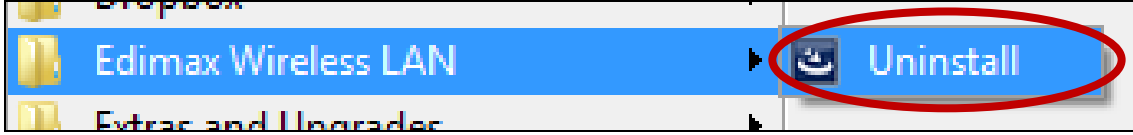


9. Yeniden başlattıktan sonra uygun Wi-Fi ağlarına bağlanabilirsiniz. Nasıl yapacağınızı öğrenmek için lütfen **IV. Adaptörü Kullanmak** bölümüne gidiniz.

III-2. Sürücünün Kaldırılması

III-2-1. Windows XP/Vista/7

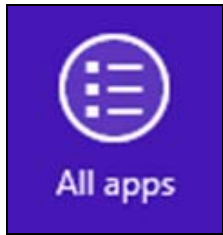
1. Başlat > Programlar > Edimax Kablosuz LAN > Sürücüyü Kaldır bölümüne gidiniz.



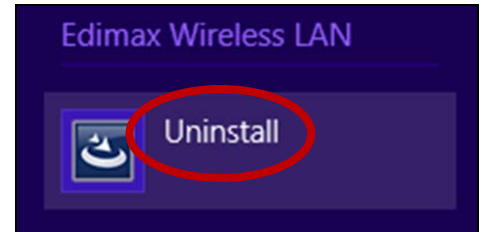
2. Ekrandaki talimatları takip ediniz. Sürücü kaldırma sihirbazı sizi yönlendirecektir.

III-2-2. Windows 8/8.1

1. "Başlat" penceresinin herhangi bir yerinde sağ tıklayınız ve sağ alt köşedeki "Tüm uygulamalar" ikonuna tıklayınız.



2. Edimax Wireless LAN kategorisini bularak "Sürücüyü Kaldır" öğesini seçiniz ve ekrandaki talimatları takip ediniz.

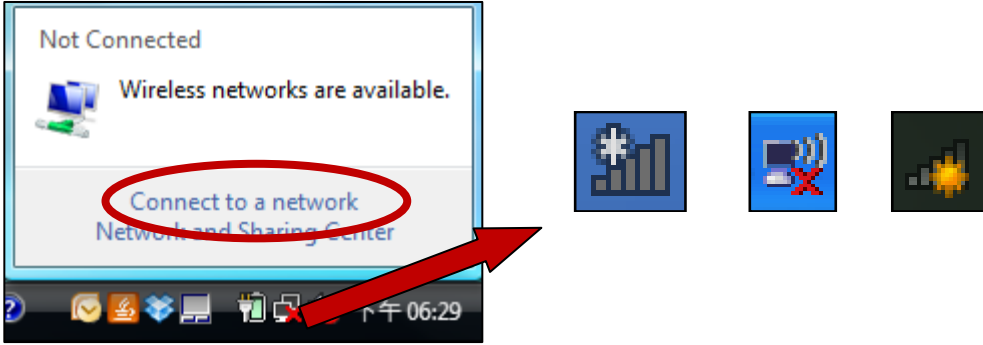


IV. Adaptörü Kullanmak

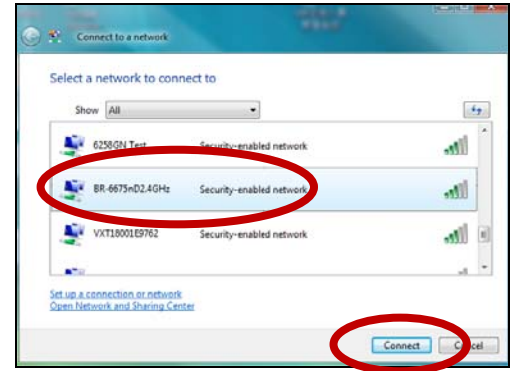
Sürücüyü yükledikten sonra Wi-Fi ağına bağlanabilirsiniz.

Aşağıda Windows Vista kullanılarak nasıl bağlanacağı gösterilmiştir – Windows'un diğer sürümleri için süreç ufak değişiklikler gösterebilir.

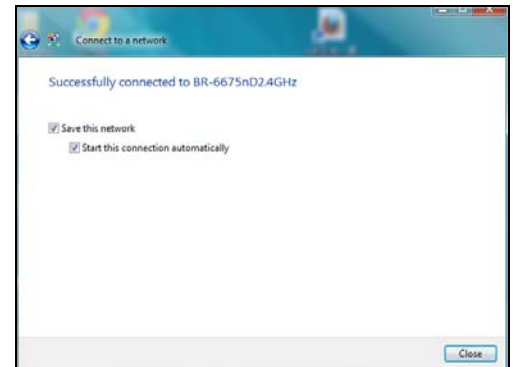
1. Sistem tepsisindeki ağ ikonuna (aşağıdaki gibi) tıklayınız ve “Bir ağa bağlan” öğesini seçiniz.



2. Wi-Fi ağınızın SSID'sini bulunuz ve “Bağlan” butonuna tıklayınız. Eğer ağınız için şifre belirlediyseniz onu girmeniz istenecektir.



3. Şifreyi doğru girdikten sonra Wi-Fi ağınıza başarılı bir şekilde bağlanacaksınız.



V. Sorun Giderme

1. Wi-Fi hızı yavaş gözüküyor ya da 802.11ac hızında değil.

- a. 802.11ac Wi-Fi hızına ulaşmak için 802.11ac Wi-Fi router'a bağlanmanız gerekmektedir.
- b. İnternet hızınızı tecrübe ediyorsanız, yerel ağınızın hızınız değil. İnternet hızınız servis sağlayıcınız tarafından sağlanan İnternet bant genişliği ile sınırlıdır. www.speedtest.net benzeri web siteleri İnternet hızınızı test eder, yerel ağ hızınızı değil. İki yerel bilgisayar arasındaki dosya transferi gerçek ağ hızınızı verecektir.
- c. Antenlerinizin sıkıca bağlı olduğunu kontrol ediniz. Daha iyi performans için anten ayağını daha az engel olacak şekilde konumlandırınız.

2. PCIe adaptörünü taktım ve sürücülerini yükledim, fakat herhangi bir Wi-Fi ağına bağlanamıyorum.

- a. Kontrol paneline gidiniz ve EW-7822PIC cihazının sürücüsünü kaldırınız. Bütün anti virüs programlarının pasif yapıldığından emin olunuz. Daha sonra EW-7822PIC cihazının sürücüsünü tekrar kurunuz.

COPYRIGHT

Copyright © Edimax Technology Co., Ltd. all rights reserved. No part of this publication may be reproduced, transmitted, transcribed, stored in a retrieval system, or translated into any language or computer language, in any form or by any means, electronic, mechanical, magnetic, optical, chemical, manual or otherwise, without the prior written permission from Edimax Technology Co., Ltd.

Edimax Technology Co., Ltd. makes no representations or warranties, either expressed or implied, with respect to the contents hereof and specifically disclaims any warranties, merchantability, or fitness for any particular purpose. Any software described in this manual is sold or licensed as is. Should the programs prove defective following their purchase, the buyer (and not this company, its distributor, or its dealer) assumes the entire cost of all necessary servicing, repair, and any incidental or consequential damages resulting from any defect in the software. Edimax Technology Co., Ltd. reserves the right to revise this publication and to make changes from time to time in the contents hereof without the obligation to notify any person of such revision or changes.

The product you have purchased and the setup screen may appear slightly different from those shown in this QIG. The software and specifications are subject to change without notice. Please visit our website www.edimax.com for updates. All brand and product names mentioned in this manual are trademarks and/or registered trademarks of their respective holders.

Federal Communication Commission Interference Statement

This equipment has been tested and found to comply with the limits for a Class B digital device, pursuant to Part 15 of FCC Rules. These limits are designed to provide reasonable protection against harmful interference in a residential installation. This equipment generates, uses, and can radiate radio frequency energy and, if not installed and used in accordance with the instructions, may cause harmful interference to radio communications. However, there is no guarantee that interference will not occur in a particular installation. If this equipment does cause harmful interference to radio or television reception, which can be determined by turning the equipment off and on, the user is encouraged to try to correct the interference by one or more of the following measures:

1. Reorient or relocate the receiving antenna.
2. Increase the separation between the equipment and receiver.
3. Connect the equipment into an outlet on a circuit different from that to which the receiver is connected.
4. Consult the dealer or an experienced radio technician for help.

FCC Caution

This device and its antenna must not be co-located or operating in conjunction with any other antenna or transmitter. This device complies with Part 15 of the FCC Rules. Operation is subject to the following two conditions: (1) this device may not cause harmful interference, and (2) this device must accept any interference received, including interference that may cause undesired operation. Any changes or modifications not expressly approved by the party responsible for compliance could void the authority to operate equipment.

Federal Communications Commission (FCC) Radiation Exposure Statement

This equipment complies with FCC radiation exposure set forth for an uncontrolled environment. In order to avoid the possibility of exceeding the FCC radio frequency exposure limits, human proximity to the antenna shall not be less than 2.5cm (1 inch) during normal operation.

Federal Communications Commission (FCC) RF Exposure Requirements

This EUT is compliance with SAR for general population/uncontrolled exposure limits in ANSI/IEEE C95.1-1999 and had been tested in accordance with the measurement methods and procedures specified in OET Bulletin 65 Supplement C. The equipment version marketed in US is restricted to usage of the channels 1-11 only. This equipment is restricted to *indoor* use when operated in the 5.15 to 5.25 GHz frequency range.

R&TTE Compliance Statement

This equipment complies with all the requirements of DIRECTIVE 1999/5/EC OF THE EUROPEAN PARLIAMENT AND THE COUNCIL of March 9, 1999 on radio equipment and telecommunication terminal equipment and the mutual recognition of their conformity (R&TTE). The R&TTE Directive repeals and replaces in the directive 98/13/EEC (Telecommunications Terminal Equipment and Satellite Earth Station Equipment) As of April 8, 2000.

Safety

This equipment is designed with the utmost care for the safety of those who install and use it. However, special attention must be paid to the dangers of electric shock and static electricity when working with electrical equipment. All guidelines of this and of the computer manufacture must therefore be allowed at all times to ensure the safe use of the equipment.

EU Countries Intended for Use

The ETSI version of this device is intended for home and office use in Austria, Belgium, Bulgaria, Cyprus, Czech, Denmark, Estonia, Finland, France, Germany, Greece, Hungary, Ireland, Italy, Latvia, Lithuania, Luxembourg, Malta, Netherlands, Poland, Portugal, Romania, Slovakia, Slovenia, Spain, Sweden, Turkey, and United Kingdom. The ETSI version of this device is also authorized for use in EFTA member states: Iceland, Liechtenstein, Norway, and Switzerland.

EU Countries Not Intended for Use

None.

EU Declaration of Conformity

- English:** This equipment is in compliance with the essential requirements and other relevant provisions of Directive 1999/5/EC, 2009/125/EC.
- Français:** Cet équipement est conforme aux exigences essentielles et autres dispositions de la directive 1999/5/CE, 2009/125/CE.
- Čeština:** Toto zařízení je v souladu se základními požadavky a ostatními příslušnými ustanoveními směrnic 1999/5/ES, 2009/125/ES.
- Polski:** Urządzenie jest zgodne z ogólnymi wymaganiami oraz szczególnymi warunkami określonymi Dyrektywą UE 1999/5/EC, 2009/125/EC.
- Română:** Acest echipament este în conformitate cu cerințele esențiale și alte prevederi relevante ale Directivei 1999/5/CE, 2009/125/CE.
- Русский:** Это оборудование соответствует основным требованиям и положениям Директивы 1999/5/EC, 2009/125/EC.
- Magyar:** Ez a berendezés megfelel az alapvető követelményeknek és más vonatkozó irányelveknek (1999/5/EK, 2009/125/EC).
- Türkçe:** Bu cihaz 1999/5/EC, 2009/125/EC direktifleri zorunlu istekler ve diğer hükümlerle ile uyumludur.
- Українська:** Обладнання відповідає вимогам і умовам директиви 1999/5/EC, 2009/125/EC.
- Slovenčina:** Toto zariadenie spĺňa základné požiadavky a ďalšie príslušné ustanovenia smerníc 1999/5/ES, 2009/125/ES.
- Deutsch:** Dieses Gerät erfüllt die Voraussetzungen gemäß den Richtlinien 1999/5/EC, 2009/125/EC.
- Español:** El presente equipo cumple los requisitos esenciales de la Directiva 1999/5/EC, 2009/125/EC.
- Italiano:** Questo apparecchio è conforme ai requisiti essenziali e alle altre disposizioni applicabili della Direttiva 1999/5/CE, 2009/125/CE.
- Nederlands:** Dit apparaat voldoet aan de essentiële eisen en andere van toepassing zijnde bepalingen van richtlijn 1999/5/EC, 2009/125/EC.
- Português:** Este equipamento cumpre os requisitos essenciais da Directiva 1999/5/EC, 2009/125/EC.
- Norsk:** Dette utstyret er i samsvar med de viktigste kravene og andre relevante regler i Direktiv 1999/5/EC, 2009/125/EC.
- Svenska:** Denna utrustning är i överensstämmelse med de väsentliga kraven och övriga relevanta bestämmelser i direktiv 1999/5/EG, 2009/125/EG.
- Dansk:** Dette udstyr er i overensstemmelse med de væsentligste krav og andre relevante forordninger i direktiv 1999/5/EC, 2009/125/EC.
- Suomi:** Tämä laite täyttää direktiivien 1999/5/EY, 2009/125/EY oleelliset vaatimukset ja muut asiaankuuluvat määräykset.

FOR USE IN

AT	BE	CY	CZ	DK	EE	FI	FR	RU				
DE	GR	HU	IE	IT	LV	LT	LU	MT	NL	PL	PT	UA
SK	SI	ES	SE	GB	IS	LI	NO	CH	BG	RO	TR	



WEEE Directive & Product Disposal



At the end of its serviceable life, this product should not be treated as household or general waste. It should be handed over to the applicable collection point for the recycling of electrical and electronic equipment, or returned to the supplier for disposal.

Declaration of Conformity

We, Edimax Technology Co., Ltd., declare under our sole responsibility, that the equipment described below complies with the requirements of the European R&TTE directives.

Equipment: AC1200 Long Range Wi-Fi Dual-Band PCI Express Adapter

Model No.: EW-7822PIC

The following European standards for essential requirements have been followed:

Directives 1999/5/EC

Spectrum : ETSI EN 300 328 V1.8.1 (2012-06);
ETSI EN 301 893 V1.7.1 (2012-06)
EMC : EN 301 489-1 V1.9.2 (2011);
EN 301 489-17 V2.2.1 (2012)
Safety (LVD) : EN 60950-1:2006+A11:2009+A1:2010+A12:2011

Directives 2006/95/EC

Safety (LVD) : EN 60950-1:2006+A11:2009+A1:2010+A12:2011

Edimax Technology Co., Ltd.
No. 3, Wu Chuan 3rd Road,
Wu-Ku Industrial Park,
New Taipei City, Taiwan



Date of Signature: February, 2015

Signature:

Printed Name:

Albert Chang

Title:

Director

Edimax Technology Co., Ltd.



EDIMAX
NETWORKING PEOPLE TOGETHER

The logo features the Greek letter sigma (Σ) as the first letter of 'EDIMAX'. A small red dot is positioned above the 'i' in 'EDIMAX'. The background of the logo area is black and contains various white line-art icons such as a handshake, musical notes, a smiley face, a game controller, and a network diagram.