



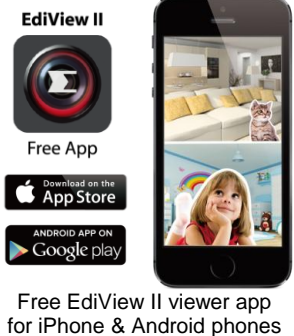
## HD Wireless Day & Night Network Camera

The Edimax IC-3140W 720p wireless network camera is a versatile monitoring device ideal for monitoring your home, shop or factory during the daytime or at night. With Edimax Plug-n-View technology, no complicated setup is required and you can easily connect the camera to the cloud and monitor remotely from a smartphone, tablet or laptop.

The IC-3140W features two-way audio, a motion & sound detection system, built-in microphone & speaker and a MicroSD/SDHC card slot. Motion detection can be configured according to user-defined areas and additionally utilizes a passive infrared sensor (PIR). Motion and audio-triggered recording ensure that you capture any illicit or suspicious activity and the wireless user interface allows for easy installation and monitoring.

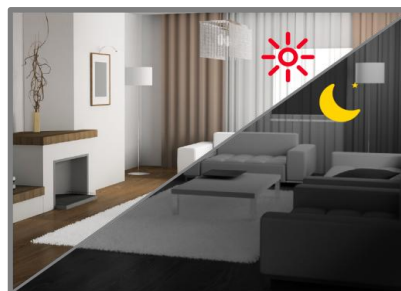
### Plug-n-View for 24/7 Easy Remote Monitoring

Edimax Plug-n-View technology makes it easy for you to keep an eye on your yard, garage, shop, factory or other assets wherever you go. With Plug-n-View technology, you can connect your network camera to the cloud in a few simple steps and access it remotely with a smartphone, tablet, or computer no matter where you are.



### Night Vision

With a light sensor, image sensor and four infrared LEDs, the IC-3140W is well equipped to meet indoor security and surveillance needs - even in low-light and night-time conditions. And with automatic ICR (IR Cut Filter Removal), infrared light is filtered out during the day time (while allowed to pass at night) ensuring exceptional video color quality at all times.

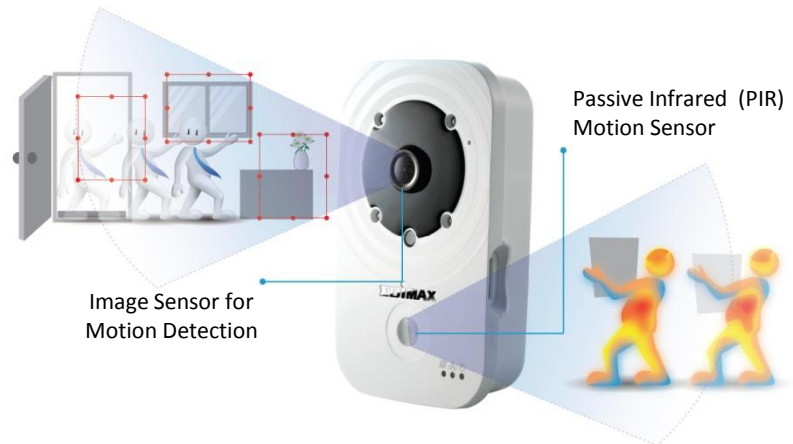


# HD Wireless Day & Night Network Camera

IC-3140W

## PIR & Motion Detection Triggered Recording

The powerful built-in motion detection system, with pre-defined detection regions and passive infrared (PIR) temperature sensor, offers peace of mind that you will capture any illicit activity. The PIR sensor detects motion via infrared radiation caused by temperature changes and when motion is detected, the network camera will produce video footage of the event immediately – storing the data on a MicroSD/SDHC card or sending it automatically via email or ftp.



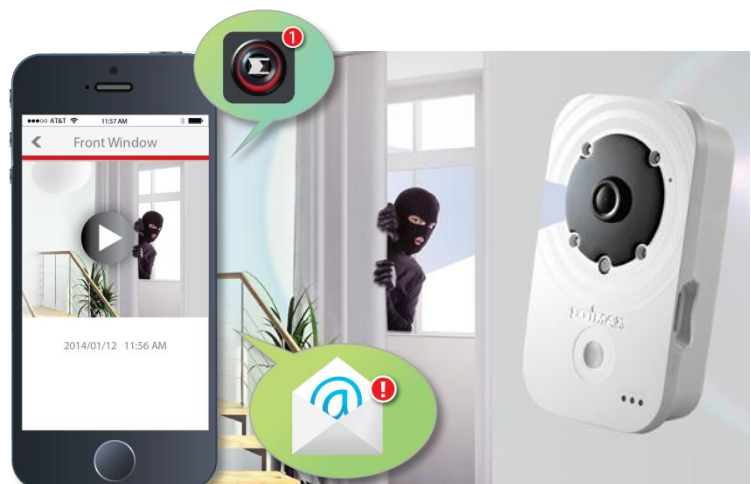
## Sound Detection Triggered Recording

The IC-3140W also features sound detection capabilities with a built-in microphone. When sound is detected, the network camera will take video footage of the event immediately in the same manner as with motion detection, and store the files locally on a MicroSD/SDHC card or send via email or ftp. Integrated sound offers a further level of security than motion-detection and visual imaging alone, providing critical real-time or post-event information about a situation, particularly in scenarios where events occur outside the camera's field of vision. The sounds of breaking windows, doors or anything else suspicious can still be registered even in situations where the event can't be seen.



## Push Notifications & Video Alerts

Push notifications are triggered by PIR, sound or motion detection, and when a detection system is triggered, the IC-3140W additionally sends video alerts to email or microSD card. If the camera ever goes offline, push notifications are also sent when the camera comes back online to keep users informed about any unusual activity.



# HD Wireless Day & Night Network Camera

IC-3140W

## Two-Way Audio

The network camera incorporates a speaker and microphone for two-way audio support, so you can remotely communicate at the camera's location or activate a deterrent alarm - a vital, cost-saving and potentially even life-saving additional security tool.



## High Quality Videos

The IC-3140W is built with a wide F2.0 lens which covers an impressive diagonal viewing angle of 78 degrees. With a megapixel CMOS sensor, the network camera is able to capture 720p (1280 x 720) videos at 24 frames per second.



## MicroSD/SDHC Card Slot for Local Storage

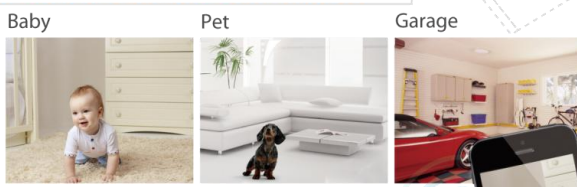
A built-in MicroSD/SDHC card slot supports cards up to 32GB for local storage and backup.



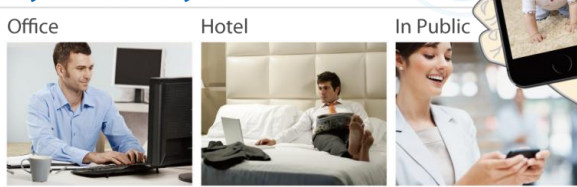
## SOFTWARE FEATURES

- Easy remote monitoring via iPhone, iPad, Android, PC & Mac
- High-speed H.264 & MJPEG video compression
- Motion & sound detected video to SD card, ftp or email
- Pre- & post-recording upon detected motion
- Viewer software to access 16 network cameras simultaneously
- Manual/scheduled/cycle recording

### Keep An Eye On What You Care About The Most

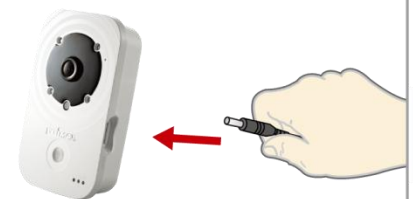


### Anywhere & Anytime



## Three Steps for Easy Smartphone Setup

- 1 Power on network camera.



- 2 Download the EdiView II app from the App Store or Google Play.

- 3 Pair the camera with your App & Wi-Fi and watch a live stream from anywhere!

# HD Wireless Day & Night Network Camera

IC-3140W

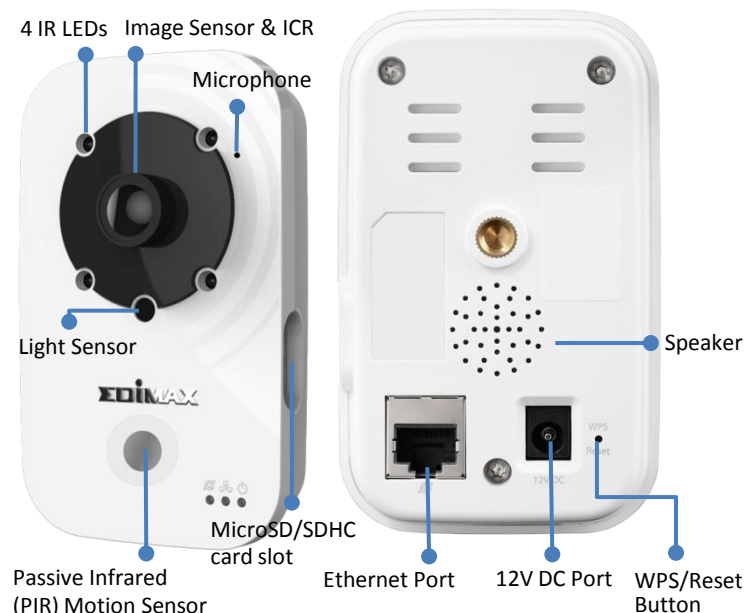
## TECHNICAL SPECIFICATIONS

Function	Management	Interface
<ul style="list-style-type: none"> <li>✦ Easy remote monitoring via iPhone, iPad, Android, PC &amp; Mac</li> <li>✦ 78 degree diagonal viewing angle</li> <li>✦ Supports dynamic DNS service</li> <li>✦ IR filter embedded</li> <li>✦ Built-in microphone and speaker for two-way audio</li> <li>✦ Built-in Passive infrared (PIR) sensor for enhanced motion detection</li> <li>✦ Motion/sound detection recording and alerts to MicroSD/SDHC card, email and FTP</li> <li>✦ MicroSD/SDHC card slot for local storage</li> </ul>	<ul style="list-style-type: none"> <li>✦ EdiView Finder (Windows/Mac)</li> <li>✦ 16-channel viewer</li> <li>✦ Web management interface</li> <li>✦ Firmware upgradable</li> <li>✦ iPhone &amp; iPad viewer app</li> <li>✦ Android viewer app</li> </ul>	<ul style="list-style-type: none"> <li>✦ Ethernet (RJ-45) port</li> <li>✦ Power jack</li> <li>✦ Reset/WPS button</li> <li>✦ Internal antenna</li> <li>✦ Micro SD/SDHC card slot</li> <li>✦ Passive infrared (PIR) sensor</li> <li>✦ Light sensor</li> <li>✦ Microphone</li> <li>✦ Speaker</li> <li>✦ IR LEDs: 4</li> <li>✦ LED indicators: Internet, LAN/Wi-Fi LNK/ACT, Power</li> </ul>
Video	Video Settings	Supported Protocols
<ul style="list-style-type: none"> <li>✦ High-speed H.264 &amp; MJPEG video compression</li> <li>✦ 1280 x 720 up to 24 fps</li> <li>✦ 640 x 480 up to 30 fps</li> <li>✦ 320 x 240 up to 30 fps</li> </ul>	<ul style="list-style-type: none"> <li>✦ Resolution: HD (1280 x 720), VGA (640 x 480), QVGA (320 x 240),</li> <li>✦ Frame rate: 5, 10, 15, 20, 24 or 30 fps</li> </ul>	<ul style="list-style-type: none"> <li>✦ IPv4, HTTP, TCP, ICMP, RTSP, RTP, UDP, RTCP, SMTP, SNMP, FTP, DHCP, ARP, DNS, PPPoE</li> </ul>
Standards	RF Output Power	IR LEDs
<ul style="list-style-type: none"> <li>✦ Fast Ethernet IEEE 802.3/802.3u</li> <li>✦ Wireless IEEE 802.11b/g/n</li> </ul>	<ul style="list-style-type: none"> <li>✦ 11b: 16dBm~18dBm</li> <li>✦ 11g: 14dBm ~16dBm</li> <li>✦ 11n: 11dBm ~13dBm</li> </ul>	<ul style="list-style-type: none"> <li>✦ IR LEDs for night illumination up to 15 feet</li> </ul>
Memory	Operating Conditions	Power
<ul style="list-style-type: none"> <li>✦ 8MB flash</li> <li>✦ 64MB SDRAM</li> </ul>	<ul style="list-style-type: none"> <li>✦ 0~40°C</li> <li>✦ Humidity: 20~80% RH (non-condensing)</li> </ul>	<ul style="list-style-type: none"> <li>✦ 12V DC x 1A</li> </ul>
Dimensions	Weight	Certifications
<ul style="list-style-type: none"> <li>✦ 65 x 110 x 27.2 mm</li> </ul>	<ul style="list-style-type: none"> <li>✦ 110g</li> </ul>	<ul style="list-style-type: none"> <li>✦ FCC,CE</li> </ul>

## APPLICATION DIAGRAM



## HARDWARE INTERFACE



\*Actual viewing resolution and frame rate of network cameras depend on connection speed.

Maximum performance, actual data rates, and coverage will vary depending on network conditions and environmental factors. Product specifications and design are subject to change without notice.

Copyright © 2014 Edimax Technology Co. Ltd. All rights reserved.

