

SD-300 / SD-310AN Wired / Wireless Serial Device Server



High Performance Ethernet or Dual Band Wi-Fi Serial Device Connectivity

The Silex SD-300 and SD-310AN are designed to easily connect and share RS-232 serial devices over a wired or wireless network. Industrial automation, building automation, medical devices, security access and control, point of sale devices, LED signs, bar code/label and other specialty printers, or virtually any other device with a serial port can now be enabled with secure, robust wired or wireless network capability. It allows flexibility to place the device anywhere on the network instead of needing to be attached directly to the computer, and multiple computers or terminals can access the serial device.

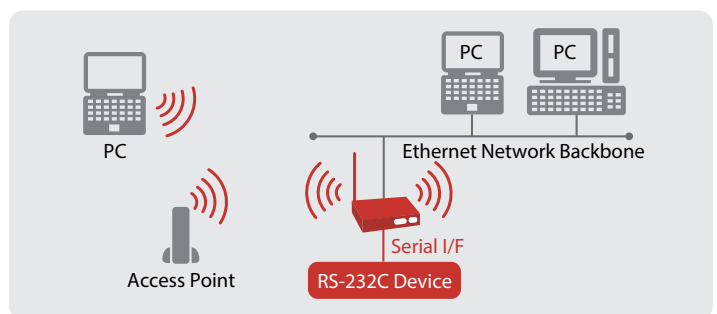
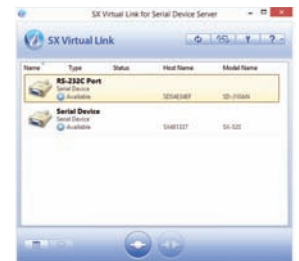
Key Features and Benefits:

- **Industry-leading security** including WPA, WPA2, and WEP, plus 802.1x authentication with the most commonly used EAP types
- **Dual band IEEE 802.11a/b/g/n support** on the SD-310AN allows communication in the 2.4 GHz and 5 GHz bands. Radio interference in the commonly used 2.4 GHz band can be avoided by utilizing 5 GHz.
- **Virtually any client device can remotely control and monitor your serial devices** including computers (Windows, Mac, Linux), mobile devices (Android, iOS), and virtual servers (VMware, Citrix, Microsoft Terminal Server and Hyper-V).
- **No special drivers or applications are needed** to use the serial devices: Drivers and applications that worked when the serial device is directly connected to the computer will continue to work across the network connected to the SD-300/SD-310AN.
- **SD-310AN provides optimized roaming** based on a signal strength algorithm between wireless access points ensuring maximum uptime for the connection.

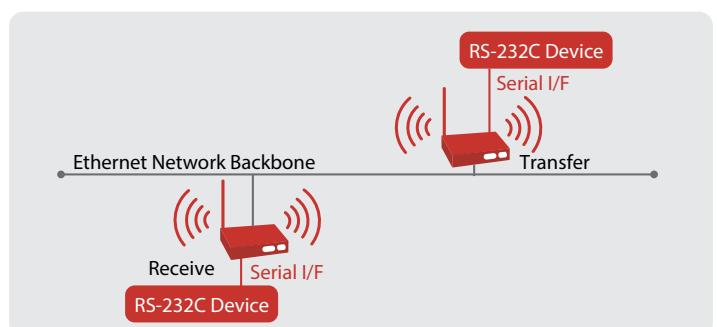
- **Multiple serial port and wireless modes** for maximum flexibility for any environment:

Serial Port Modes

- **Serial Port Emulation Mode:**
The included Silex SX-Virtual Link software precisely emulates a serial port (or COM port) connection on a computer operating system, and then redirects the packets over the network to the serial port of the SD-300/SD-310AN.
- **Raw TCP Connection Mode:** This mode makes it possible to directly communicate with a serial device via TCP application program using a TCP socket API.



- **eCable Mode:** Serial data can be tunneled over the network between devices connected to SD-300/SD-310AN.

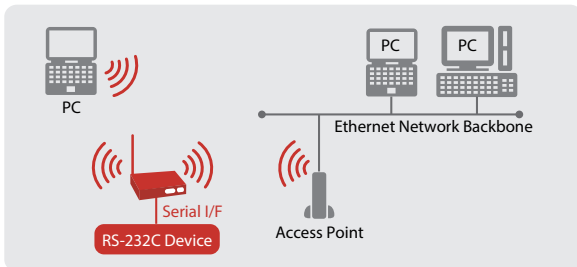




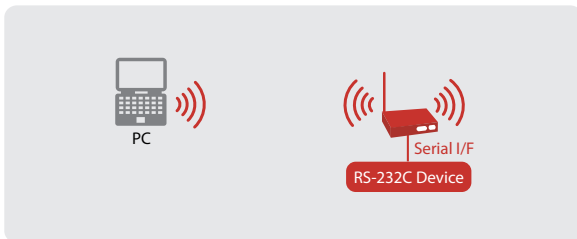
SD-300 / SD-310AN Wired / Wireless Serial Device Server

Wireless Modes:

- **Wired Mode:** The SD-300 and SD-310AN are equipped with an autosensing 10/100 Ethernet port. SD-300 is wired only. SD-310AN can also operate in wired mode to connect to the Ethernet network.
- **Wireless Station (Client) Mode:** The SD-310AN can connect to an existing 802.11a/b/g/n Wi-Fi network. The dual band capability and enterprise security ensure a stable connection to even the most advanced wireless networks.



- **Wireless Access Point Mode:** The SD-310AN can create a wireless network so any wireless client (station) can easily make a direct secure connection.



OEM Embedded Modules



- OEM circuit boards for integration of wired or wireless connectivity are also available. Please contact us for details.

Specifications:

Product Name	SD-300	SD-310AN
Article number	EU: E1308 UK:1320	EU: E1309 UK:1321
Wired LAN	10/100	
Wireless Standard	IEEE802.11a/b/g/n	
Security	WEP (128 bits), WPA-PSK (AUTO) WPA2-PSK (AES), IEEE 802.1X (LEAP, PEAP, TTLS, TLS, EAP-FAST)	
<i>Note: WEP and 802.1x are only available in wireless station (client) mode</i>		
Device Interface	RS-232C	
Supported OS (SX-Virtual Link Serial Port Emulator)	Windows 8 / 8.1 (32/64-bit), 7 (32/64-bit), Vista (32/64-bit), XP (32/64-bit), 2000, Windows Server 2012/2008/2003 (32/64-bit)	
<i>Note: RAW TCP mode and eCable mode are not OS dependent</i>		
Supported Protocols	TCP/IP	
Setting Method	Configuration utility, Web browser, TELNET	
External Dimensions	W: 125.7mm x D: 75.1mm x H: 24.1mm (body only, excluding protrusions)	
Weight	290g (body only)	305g (body only, including antenna)
Environmental Conditions	Storage:	
	• Temperature: -20 ~ + 70°C • Humidity: 20 ~ 90% RH	
Environmental Conditions	Operating:	
	• Temperature: 0 ~ + 50°C • Humidity: 20% ~ 80% RH (non-condensing)	
Maximum Power Consumption	2.25W (DC5V/0.45A)	2.5W (DC5V/0.5A)
Regulatory Compliance	VCCI Class B, FCC Class B, ICES-003 Class B, CE Class B	
Other	SX Virtual Link for Serial Device Server version 3.8.0 or later	
Included Items	Body, AC adapter, setup guide, rubber feet, wireless LAN antenna (SD-310AN only), GPL inquiry sheet, warranty card	

About Silex

Since 2000, silex technology europe GmbH has been a subsidiary of the Japanese company silex technology, Inc. The parent company in Japan has been involved in development and production since 1973. Thus Silex Technology can look back on over 40 years of experience and quality work. In addition to the central company headquarters in Kyoto, there are locations in Tokyo, the USA, China and Europe.

Today, the Silex group is not only a world market leader in integrated network printing technology, but also a leading supplier of connectivity in the areas of USB, Serial, AV and WLAN. Many well-known manufacturers of computer peripherals rely on the technologies of Silex Technology and use them as OEM supplies for their own products.

In addition to mature technologies and quality products, the company also offers a complete range of services, such as free lifetime support by telephone, email or remote access for all customers.

silex technology is a registered trademark of silex technology, Inc. Other product or brand names may be registered trademarks or trademarks of their respective owners. Technical information and specifications are subject to change without notice. © silex technology, Inc. All rights reserved.

Global marketing and support locations:



Europe
silex technology europe GmbH
+49-2151-65009-10
Toll-free hotline in Germany:
0800-7453938
www.silexeurope.com
> contact@silexeurope.com

Japan
silex technology, Inc.
+81-774-98-3782
www.silex.jp
> support@silex.jp

USA
silex technology america, Inc.
+1-801-747-0656
Kostenfreie Hotline USA:
866-765-8761
www.silexamerica.com
> contact@silexamerica.com

China
silex technology beijing, Inc.
+86-10-8497-1430
www.silex.com.cn
> contact@silex.com.cn



JQA-QMA2607
silex technology, Inc.



JQA-EM3813
silex technology, Inc.
Design & Manufacturing Center