

# Wireless Bridge

## SX-BR-4600WAN



Wireless LAN converter supporting high-speed IEEE802.11a/b/g/n communications

### Wired LAN devices can be used in a wireless LAN environment.

#### Overview

SX-BR-4600WAN is a wireless bridge to convert 10/100/1000BASE-T supported wired LAN devices to wireless LAN devices, enabling PC peripheral devices including wired LAN printers and surveillance cameras to be easily connected to a wireless LAN environment. Various wireless securities are also available for secured communications.

#### Features

##### 1 Wireless capabilities free devices from installation location limitations

Users can build an environment without burden of cable wiring. Users can freely and frequently change layouts and introduce work equipment effectively for offices, factories, schools and commercial facilities. There is no need of LAN wiring constructions. It brings users a large effect on cost reduction.

##### 2 IEEE 802.11a/b/g/n support

SX-BR-4600WAN is designed to communicate at 2.4GHz and 5GHz bands. Radio interference occurred commonly at 2.4GHz band can be prevented by leveraging 5GHz band.

##### 3 Gigabit Ethernet support

A wired LAN port supporting 10/100/1000BASE-T (auto-recognition) is onboard for a wired LAN device connection.

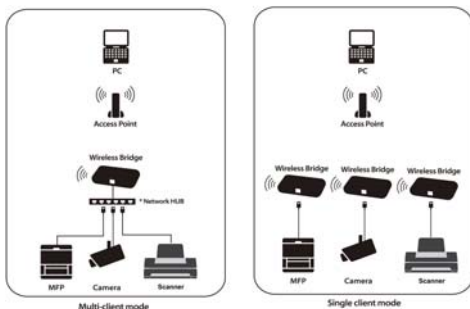
##### 4 Two operation modes

###### Single client mode

- Able to connect one device, which is connected to the wired LAN port of SX-BR-4600WAN using a LAN cable, to wireless LAN
- Uses a MAC address of the device connected to the wired LAN port for wireless LAN communications (MAC address transparent function)
- Stops the bridge functionalities when the device connected to the wired LAN port is replaced by the other device (security function)

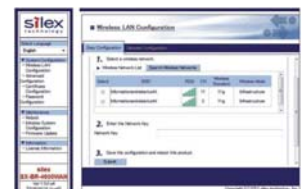
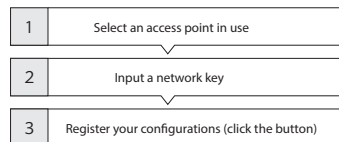
###### Multi-client mode

- Able to connect up to 16 wired LAN devices to wireless LAN when devices are hooked up to the wired LAN port using a HUB.
- Uses a MAC address of SX-BR-4600WAN for wireless LAN communications.



##### 5 Original easy setup (patented)

SX-BR-4600WAN gives an easy setup using the enclosed LAN cable.



##### 6 Advanced securities

Wireless LAN securities are well concerned. SX-BR-4600WAN supports following security functions.

- ☑ WEP (64 Bit/128 Bit)
- ☑ WPA-PSK (TKIP/AES)
- ☑ WPA2-PSK (AES)
- ☑ IEEE 802.1X EAP-PEAP, EAP-TLS, EAP-TTLS, EAP-FAST, EAP-LEAP

These are available when the other end devices of communications such as access points and wireless routers support the same function as well.

#### Technical data

Part number	SX-BR-4600WAN	
Item number	E1260	
Network interface	10BASE-T, 100BASE-TX, 1000BASE-T (Auto-recognition)	
Wireless LAN	IEEE 802.11a/b/g/n (11n:2-Stream)	
Security	WEP (64/128), WPA-PSK (TKIP/AES), WPA2-PSK (AES), IEEE 802.1X (EAP-PEAP, EAP-TLS, EAP-TTLS, EAP-FAST, EAP-LEAP)	
Dimensions	110,5 × 79,0 × 27,6 (mm)	
Weight	130 (g)	
Max. power consumption	3,75 Watt: 5 Volt - 0,75 Ampere	
Approvals	VCCI/FCC/CE class B	
Environmental conditions	Operating : 0 to 40 °C Operating : -10 to +50 °C	humidity : 20 to 80 % RH humidity : 20 to 90 % RH
Accessory	Main unit, setup guide, warranty, AC adapter, LAN cable, GPL inquiry sheet	



silex technology is a registered trademark of silex technology, Inc. Other products or trade names are the registered trademarks of their owners. Changes to technical specifications and data may be made with no prior notice. © 2012 silex technology europe GmbH. All rights retained.

#### Global marketing and support locations:



**Europe**  
silex technology europe GmbH  
+49-2151-65009-10  
Toll-free hotline in Germany:  
0800-7453938  
www.silexeurope.com  
> contact@silexeurope.com

**Japan**  
silex technology, Inc.  
+81-774-98-3782  
www.silex.jp  
> support@silex.jp

**USA**  
silex technology america, Inc.  
+1-801-747-0656  
Toll-free hotline USA:  
866-765-8761  
www.silexamerica.com  
> contact@silexamerica.com

**China**  
silex technology beijing, Inc.  
+86-10-8497-1430  
www.silex.com.cn  
> contact@silex.com.cn